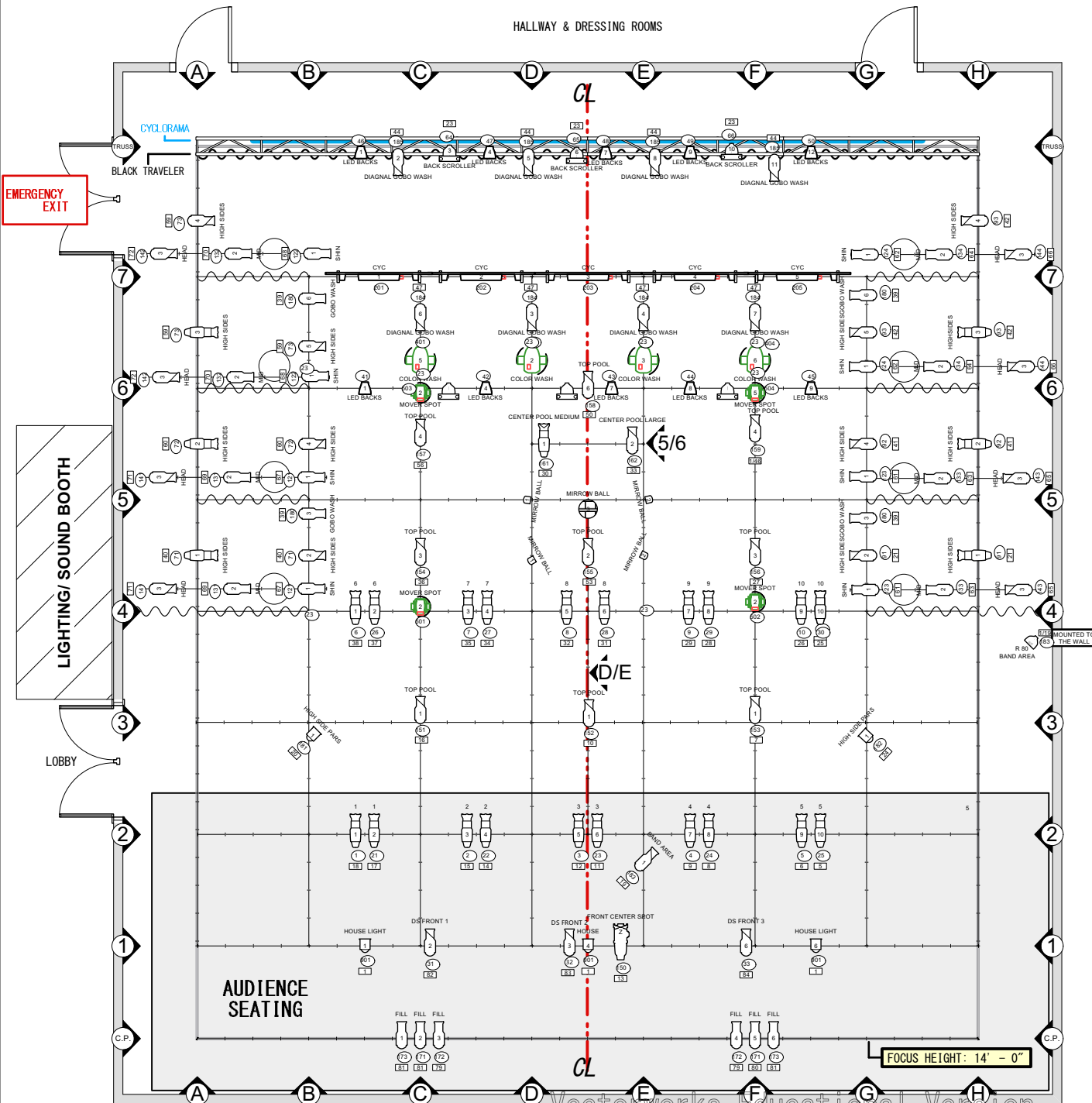


TO WOMEN'S DRESSING ROOM

TO MEN'S DRESSING ROOM

HALLWAY & DRESSING ROOMS



# CENTER STAGE THEATER HOUSE LIGHT PLOT

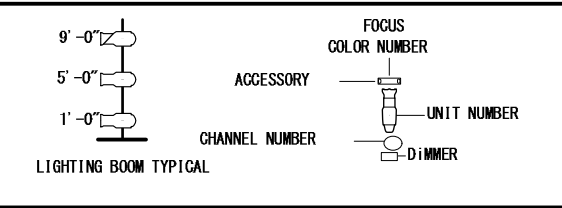
as of 8/24/2021

SCALE: 1/8" = 1' - 0"

GRID HEIGHT: 20' - 0"

## SYMBOL KEY

INSTRUMENTS	No. IN INVENTORY	USED	REMAINING
ETC S4 50deg	1	1	0
ETC S4 36deg	25	24	1
ETC S4 26deg	1	0	0
Altman 360Q 6x9	28	30	5
Altman 360Q 6x12	36	33	3
ETC S4 PAR	16	6	10
Altman 6" Fresnel	20	5	15
GLP Impression FR1 Normal	4	4	0
Mover SPOT100	2	2	0
Mover SPOT100	2	2	0
Chauvet Ovation B-2805 FC	5	5	0
ETC ColorSource PAR RGBDeepBlue	10	10	0
RGB LED Pin Spot	4	4	0



**NOTE 1:**  
Lighting instruments in the plot can be moved, refocused and recolored. Renter is responsible for personnel charges to make these changes and restore to the rep plot, and must be part of the renter's rental footprint. Consult with the Technical Director if you are interested in making any changes.  
NO ADDITIONAL INSTRUMENTS MAY BE ADDED TO "CP-1" OR "CP-2"

**NOTE 2:**  
ADDITIONAL CHARGES WILL BE ADDED FOR THE USE OF:  
SIDE LIGHT BOOMS, COLOR SCROLLERS OR ADDING ADDITIONAL INSTRUMENTS.

Vectorworks Educational Version

Vectorworks Educational Version



Vectorworks Educational Version

Vectorworks Educational Version